



VOICE



IMAGES



HIGH-SPEED DATA



WWW



FAX



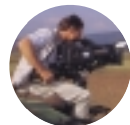
STORM TOTALLY MOBILE 64kbts/s ISDN COMMUNICATIONS

Communicating from inaccessible locations has taken on a new perspective with the advent of the Global Area Network (GAN) from Inmarsat and the arrival of the latest high performance terminal - Ottercom's **STORM**.

STORM's compact, rugged construction provides reliable high-speed data-handling facilities in a tough, go-anywhere format. The whole unit weighs just 5.5kg (including battery).

STORM can send and receive voice and data at a standard speed of 64kbts/s - or up to 128kbts/s by bonding 2 terminals. Users can send and receive e-mails, access the Internet, send voice and fax messages, videos, still photographs - whatever situation you are in, the rest of the world is not as far away as you think.

STORM's unique design and comprehensive set of interfaces enable anyone to travel the world equipped with the ultimate communications package.



BROADCASTERS, requiring a leading edge communications package for up-to-the-minute news gathering and remote reporting - **STORM** caters for store and forward video, still picture transmission, broadcast quality voice, and video conferencing.



SURVEYORS, needing to transmit high volumes of data and maintain communications links from remote sites - **STORM** supports up to 3 hours of constant high speed data, and up to 6 hours of voice, with 50 hours' standby time from standard heavy duty camcorder batteries.



DEFENCE, Peacekeeping and Disaster Relief duties, involving regions with a severely disrupted local communications infrastructure - where the **STORM**'s rugged construction and reliable operation are essential features.



ANYONE, who requires a rugged, reliable terminal capable of providing 64kbts/s ISDN communication from remote locations.





FAST DATA AND FLEXIBLE INTERFACES

A comprehensive selection of interfaces - ISDN, X21, RS449, USB, RS232 - provides ISDN and other 64kb/s PSTN connectivity. **STORM** also integrates a versatile interface for customer-specific applications.

Using the ISDN bonding interface to connect two terminals together, data transfer rates can be accelerated to 128kb/s.

STORM is equipped with Inmarsat Packet Data Service (IPDS) packet data mode capability, providing the latest and most cost-effective service currently available.

RUGGEDLY CONSTRUCTED AND READY FOR ACTION

The **STORM's** tough construction can contend with some of the worst environments the world has to offer. Designed to combat the weather, it features a splash-proof indoor unit and sealed antenna unit. **STORM** is supplied in a soft carry case, but can be delivered with a specially-designed high quality roller case that conforms with airline

carry-on regulations - offering further protection within a smart, portable package.

Open up the case, connect the indoor unit to the antenna and **STORM** is instantly ready for action. Comprising an integral telephone handset, keypad and LCD screen, **STORM** can be swiftly deployed via a simple set-up routine, without the need for any external devices. The antenna can be placed up to 10m away from the indoor unit using the standard cable, or up to 70m with the optional extension kit.

The **STORM's** SIM card is housed inside the indoor unit, well protected from the elements, and can be removed in seconds.

POWERED FOR PERFORMANCE

STORM uses heavy-duty rechargeable camcorder batteries, available from most camera stores, and provides constant high-speed data usage of approximately 3 hours. **STORM** can be powered directly from a 10.2v-15.6v DC supply and has a wide-ranging AC adaptor.



STORM delivers the high data rate services provided by Inmarsat's Global Area Network in a tough, go-anywhere format.



RUGGED



WEATHERPROOF



COMPATIBLE



LONG BATTERY LIFE

TECHNICAL DATA

Size and weight

Indoor Unit	220 x 269 x 75 mm
Outdoor Unit	399 x 397 x 92 mm
Antenna	399 x 397 mm
Weight	5.5kg (Inc Battery)

Humidity

IME 95% non-condensing at 40°C
(IME = Indoor Unit)
EME 100% condensing
(EME = Outdoor Unit)

Services

ISDN basic rate interface, NT1 S/T bus
ITU-T I.430 compliant
56/64kb/s data (UDI)
56/64kb/s speech
128kb/s with ISDN Bonding
3.1kHz audio
Inmarsat Packet Data Services (IPDS)
4.8kb/s AMBE voice
Secure voice STU III/IIB

Interfaces

ISDN (RJ45), 2 x RJ11, RS232,
X.21, RS449 and USB

Battery Capacity

64kb/s data	up to 3 hrs continuous
Voice	up to 6 hours
Standby time	50 hours

PC Application Software

For Windows 95, 98, NT, 2000

AC Adaptor

100 to 240 VAC 47 to 63Hz

Electromagnetic Compatibility

EN 300 339, TBR 44

Optional Configurations

Rigid tripod antenna mount
Pole-mounted antenna
128kb/s with 2 terminals
19" rack-mounting version
Rugged notebook PC with application software loaded



Antenna Cable

Up to 20m (RG223)
Up to 70m (RG214)

Environmental Conditions

Operational Temperature Range
Indoor Unit -25 to +55°C
Outdoor Unit -25 to +55°C
Storage Range -40 to +80°C
Shock Survival 20g (11ms half sine wave)

Ottercom reserves the right to amend specification without prior notice



SHANNON WAY ASHCHURCH TEWKESBURY GLOUCESTERSHIRE GL20 8ND UK
TELEPHONE +44 (0)1684 290020 FACSIMILE +44 (0)1684 295535
WEB SITE www.otter.co.uk EMAIL info@otter.co.uk